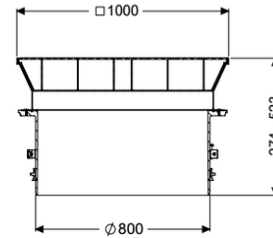
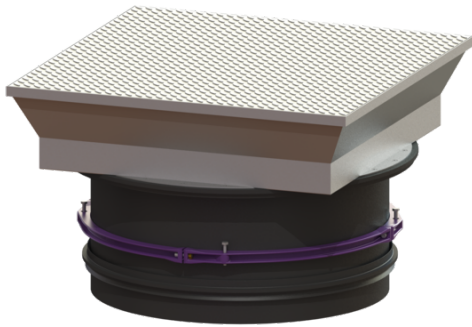


Upper section Square cover plate, LW 800, Class D



Article information

Item no.: 8740180
 GTIN: 4026092070468
 Price group: 60

Description

Upper section for continuous height and level compensation for chamber module LW 1000, consisting of a drive-over, flush-to-ground cover for setting in concrete, with inner joints, all-round frost- and weather-proof seal, gas spring as an opening aid incl. self-effective arresting device. An all-round concrete ring must be prepared on site. Suitable for taper with 800 mm access.

General characteristics

Colour: black
 Material: Polymer

Dimensions

Net weight: 152,37 kg
 Gross weight: 170,1 kg
 Clear width (LW): 800 mm
 Vertical installation: 274 - 523
 Packaging dimension: length
 Packaging dimension: width
 Packaging dimension: height

Coverage features

Type: surface water resistant
 Surface: Stainless steel
 Cover locking: screwed
 Load class: D 400 (EN 124)